

KIDS, MENU

Strictly under 11's only



MAINS - £7.90

BEEF BURGER
with fries and peas

CHICKEN NUGGETS
with fries and peas

PENNE PASTA
with tomato sauce and
grated Cheddar cheese

SUNDAY LUNCH

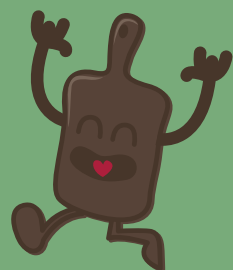
ROAST BEEF - £13

ROAST CHICKEN - £13

ROAST LAMB - £14



WELCOME



DRINKS

APPLE | ORANGE | CRANBERRY JUICE - £3
(small £1.80)

J20 - £3.80
Apple Mango | Apple Raspberry | Orange Passionfruit

APPLETISER - £3.80

FRUIT SHOOT - £1.80
Summer Fruits | Apple & Blackcurrant | Orange



DESSERTS

TUB OF ICE CREAM - £3.50

CHOOSE FROM:

STRAWBERRY

CHOCOLATE

VANILLA



181 CENTRAL ROAD | WORCESTER PARK | KT4 8DR

Terms & Conditions : **Food Allergies and Intolerances:** Before you order your food, please speak to our staff if you have a food allergy or intolerance. All weights quoted are approximate, prior to cooking. Some fish dishes may contain bones. All dishes are subject to availability. All prices include VAT. Wholemeal may contain one or more tails. All photography is for guidance only. Whilst we take every care to preserve the integrity of our dishes to reduce cross contamination, we must advise that these products are handled in a multi-use kitchen environment and we unfortunately cannot guarantee allergen free dishes. (v) Items suitable for vegetarians. (ve) items suitable for vegans.



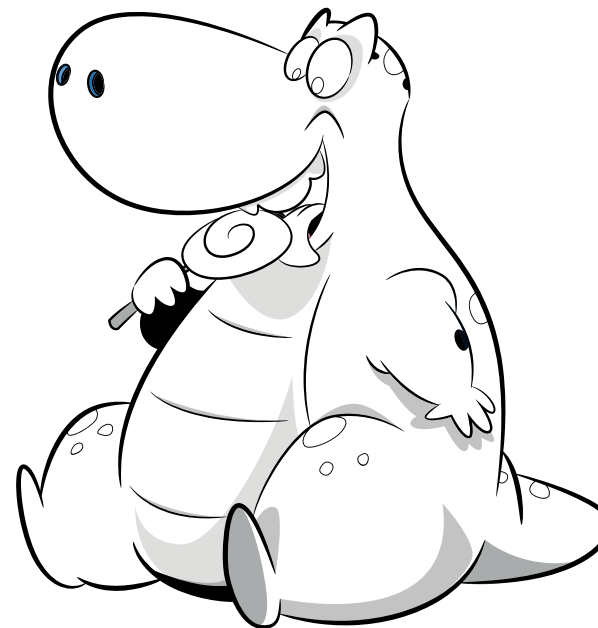
FOOD HYGIENE RATING

0 1 2 3 4 **5**

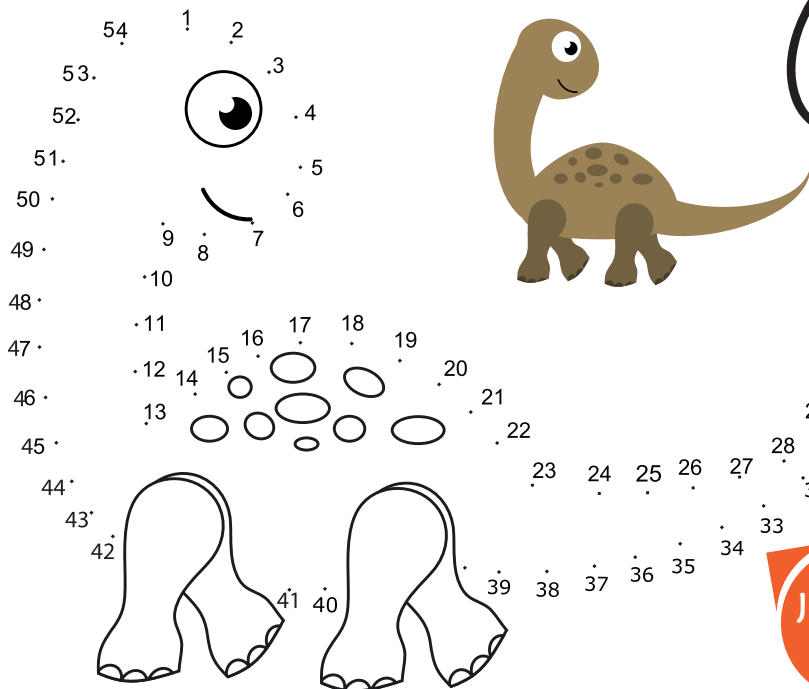
VERY GOOD

Use the letters to spell the word.

N A D O
S R U I



Eight empty dashed boxes for writing the word.



Colour Me

Join the Dots

